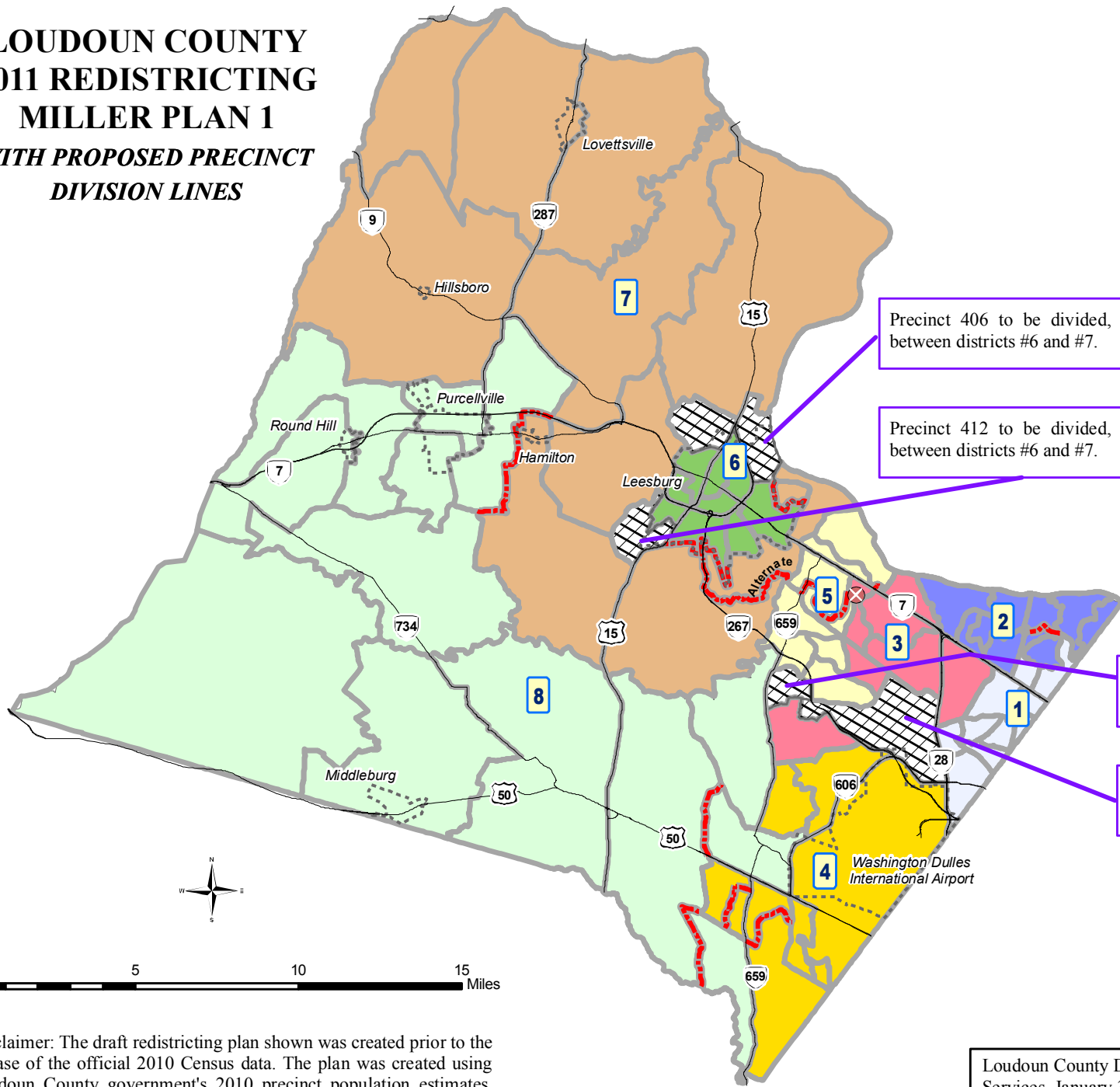


**LOUDOUN COUNTY
2011 REDISTRICTING
MILLER PLAN 1
WITH PROPOSED PRECINCT
DIVISION LINES**



Legend

- Major Road
- ▤ Town/Airport
- ▭ Existing Precinct
- ▬ Proposed Precinct Division

Proposed District

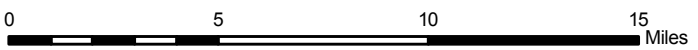
- 1
- 2
- 3
- 4
- 5
- 6
- 7
- 8
- Unassigned

Precinct 406 to be divided, between districts #6 and #7.

Precinct 412 to be divided, between districts #6 and #7.

Precinct 105 to be divided, between districts #3 and #5.

Precinct 113 to be divided, between districts #1 and #3.



Disclaimer: The draft redistricting plan shown was created prior to the release of the official 2010 Census data. The plan was created using Loudoun County government's 2010 precinct population estimates.

Loudoun County Department of Management and Financial Services, January 31, 2011; Map Number 2011-079.